

# Company Profile



**Development  
Planners &  
Consultants**

**LEADING SINCE 1980**



**Development Planners & Consultants**



## 1. Background

Development Planners & Consultants (DPC) was established in the year 1980 as a multidisciplinary consultancy firm. The organization is managed and operated by a management team consisting of highly professional executives under an operational guideline. DPC has grown with time and continued to adapt with the ever-changing scenario of the country by working in line with the focus of the government, donors, and development partners. The growth of the organization followed the path of meeting emerging consultancy needs and supports that are the integral parts of development planning.

DPC, one of the first generation consultancy houses of the country, thus survived the test of time and achieved sectoral focus, institutional diversity and an efficient management team who has the ability to understand and interact with the government, bilateral/multilateral donors and non-governmental agencies to cater the specific needs and contribute to the development approaches and priorities through associating conclusively with the need-driven sphere of activities. Having maintained professional relation and regular communication with the globally and locally acclaimed consultancy houses, institutes and research organizations, DPC shares the pride in its effort to update and replenish itself - technically, institutionally and epistemologically.

## 2. Basic Company Information:

Mailing Address	<b>Development Planners and Consultants (DPC)</b> Hamid Center, 6 <sup>th</sup> Floor, 42 Kazi Nazrul Islam Avenue, Kawran Bazar, Dhaka 1215		
Year of Establishment	1980	Type of Business	Consultancy & ICT
Trade License No.	05-00004	TIN No.	240676593399/sa: 326
VAT Registration No.	9131021866 – 90403		
Name of Banks	Dutch-Bangla Bank Ltd., Elephant Road Branch, Dhaka		
Financial Turnover (Last 3 Years)	> 2013-2014: Tk. 44.81 million > 2014-2015: Tk. 45.95 million > 2015-2016: Tk. 48.34 million		

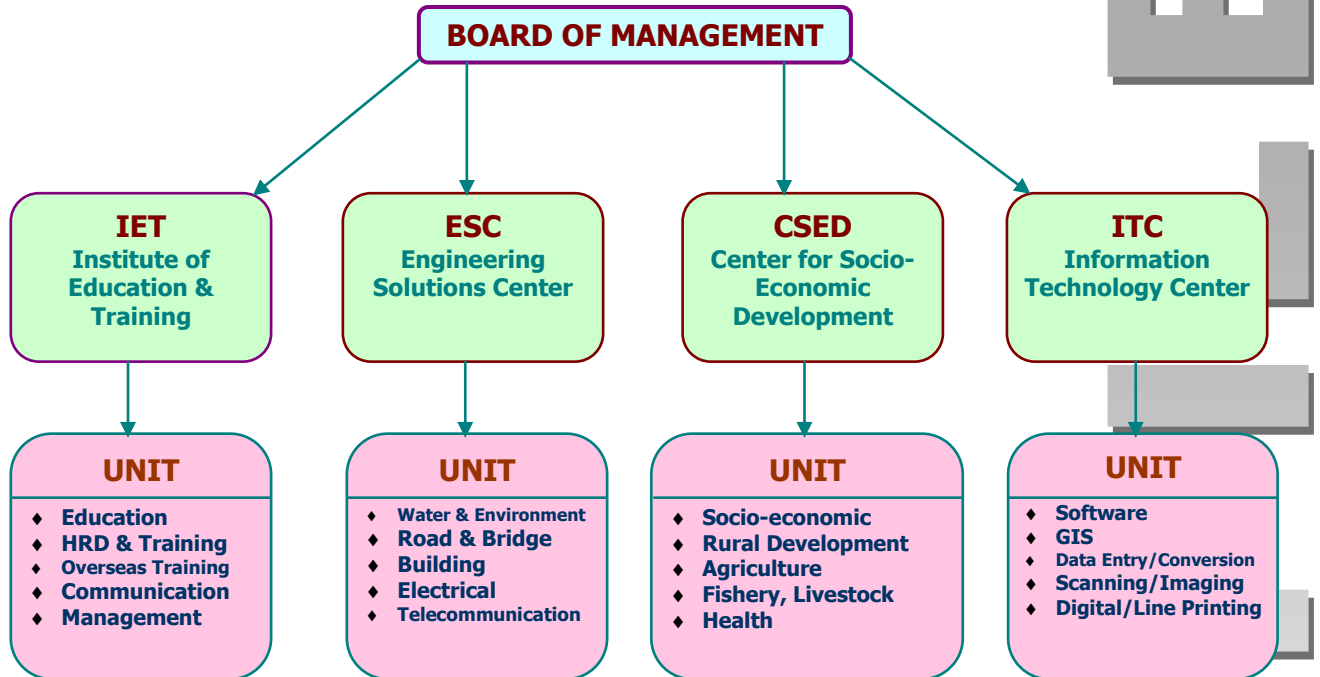
## 3. Organization and Management

DPC comprises a participatory management system. The company has a structure of accountability in place to govern the rapid and well-coordinated function as well as implementation of the projects undertaken by the organization. The key-officers of the organization have sound professional capability in their respective fields. Of the large pool of human resources, numbering around 50 of various disciplines, a good number of professionals are associated with the management of the organization, thus stimulating the activities of the key officers.





## ORGANOGRAM



### 4. Functional Capability

DPC is specialized in government, bilateral and multilateral donor assisted public and private sector development projects/programs - planning, designing and study; project implementation, supervision and monitoring; with special focus on information communication technology (ICT). DPC has a large number of successful accomplishments in software customization/development and networking solution for public and private sectors. The company has the capacity of operating large volume document/map scanning, data entry/conversion, map digitization, laser/digital/line printing etc.

### 5. Financial Capacity

DPC is financially sound and has the capacity to handle large volume of work at a time as far as financial matters are concerned. The company has updated and refreshed banking procedures with several national and international banks working in Bangladesh.

### 6. Staffing

DPC is managed by a large full time payroll. All the staff have been selected and recruited by thoroughly assessing their particular academic attainments and aptitudes. The employees of DPC are divided in administrative and technical categories, numbering around 50, comprised of professional, sub-professional, technical, administrative crews and support staff.





A list of staff is shown below:

Discipline	Staff #	Discipline	Staff #
• Economist	1	• Education Specialist	2
• Sociologist/ Anthropologist	1	• Health Specialist	1
• Statistician/ Demographer	1	• HRD/ Training Specialist	1
• Agronomist/ Agriculturist/ Soil Scientist	1	• Media, Communication & Legal Specialist	1
• Credit/ Banking/ Marketing Specialist	1	• System Analyst/ Designer	1
• Fishery/ Poultry/ Livestock/ Forestry Expert	1	• Database & Network Administrator	2
• Survey/ Research Officer	5	• Programmer	2
• Civil/ Structure/ Supervision Engineer	1	• GIS Technician/ Database Supervisor	1
• Water Resources/ Planning Design Engineer	1	• Maintenance Technician/ Engineer	2
• Electrical and Mechanical Engineer	2	• Data Conversion Operator/ Technician	10
• Sanitary, Water Supply & Environment Engineer	1	• Manager (Admin, Accounts)	2
• Electrical Engineer	1	• Development Officer and Assistants	3
• Town Planner and Architect	1	• Administrative/ Accounts Officer & Assistant	3
• Diploma Engineer/ Supervisor, Draftsman	1	• Driver/ Peon/ Messenger/ Others	4

## 7. Logistics

DPC is entirely equipped with state-of-the-art equipment which are available for client's services as well as suitable to carry out any project effectively. The list below would facilitate having a sound idea about the available company resources.

### Office Space

- Hamid Center, 6<sup>th</sup> Floor, 42 Kazi Nazrul Islam Avenue, Kawran Bazar C/A, Dhaka 1215 (1200 sqft)
- House 17, (4<sup>th</sup> Floor), Road 17A, Block E, Banani, Dhaka 1213 (2100 sqft)

### Communication Facilities

- **Telephone:** 880-2-58156126
- **Fax:** 880-2-58156126    **E-mail:** info@dpc-bd.org    **Web:** www.dpc-bd.org

### Equipment/Machineries

Equipment/Machinery	Unit #	Equipment/Machinery	Unit #
<b>Computer/Server</b>		<b>Printers</b>	
○ Server (with Dual Processor)	04	○ Laser Printer (Colour)	02
○ Computers – PC/Work Station	25	○ Laser Printer (Heavy Duty)	06
○ Note Book Computers	02	○ Laser Printer (Mid Level)	02
<b>Scanning Equipment</b>		○ Laser Printer (Low End)	02
○ Heavy Duty Scanner (Duplex)	03	○ Line Pinter (1700 Line Per Minute)	02
○ Mid Level Scanner (with ADF for Duplex)	02	<b>Binding and Reproduction</b>	
<b>Network</b>		○ Binding Machines	01
○ Switch/Hub	10	○ Laminating Machine	01
○ Router/Modem	02	○ Photo Copier	01
○ Patch Panel	05	<b>Power Back-up</b>	
<b>GIS/Mapping Equipment</b>		○ UPS (Online and Offline)	08
○ Digitizer	01	<b>Training Equipments/Aids</b>	
○ Plotter	01	○ Multimedia Project	0
○ GPS	04	○ Projector (Overhead and Slide)	0
<b>Transport</b>		○ Television	01
○ Micro Bus	01	• VCP/VCR	02
○ Motor Bike	01	○ Cassette Recorder	02
○ Sedan Car	01	○ Video and Digital Camera	04





**Software Library:** Microsoft Visual Basic 6.0, Microsoft Visual C++ 6.0, Microsoft Visual FoxPro 6.0, Developer 2000, Microsoft Visual Source Safe 6.0, Microsoft Data Report, Seagate Crystal Report 7.0, Seagate Crystal Report 8.0, SPSS 7, SPSS 10, ArcInfo 7.2.1, ArcView GIS 3.2, MapObject, Gothic, Erdas Imagine, Idrisi, FACTS, AutoCAD, MapScan, PopMap, Microsoft Visio 2000, Microsoft Project, Microsoft FrontPage 2000, Microsoft Visual InterDev 6.0, Microsoft Access 97/2000, Microsoft Access 2000, Microsoft SQL Server 7.0/2000, Oracle 8, Oracle 8i, Oracle 9i, etc.

## 8. Experience

DPC has managed more than 275 projects/assignments independently and in collaboration with other national and international esteemed organizations. A list of significant works is being given below:

<b>List of On-going Projects:</b>	
<b>DSHE</b>	Data Entry, Processing & Data Management under Secondary Education Stipend, 2 <sup>nd</sup> Phase Project for the Academic Year 2015-2017.
<b>LGED/PMT</b>	Data Entry of PMT Activities of SEQAEP Upazila under Dhaka and Mymensingh Division.
<b>UNDP</b>	Development of Online Case Database and Case Management System - Online/Web Based Software Development & Case Data Entry. Funded by UNDP.
<b>Food/GOB</b>	Movement Manual, Least Cost Route, Stock in Transit, Movement Programming Software and Reviewing of Godown and Transit Loss under Procurement Division, Directorate General of Food. Notification of Award Dated: 04.06.2014. Contract price Tk. 1,50,00,000.00 (One Crore and Fifty Lakh) only.
<b>List of Major Completed Projects by Sector:</b>	
<b>Land, Housing &amp; Urban Development</b>	
<b>MOL/Coastal</b>	Study on Char & Islands of the Coastal Area of Bangladesh in Connection with Study of Detailed Coastal Land Zoning including Two Pilot Districts of Plain Land Project, Ministry of Land, 2009-2010
<b>MOL/GoB</b>	CLMS-Computerization of Land Management Systems of Dhaka City (Phase-II), Ministry of Land (MIS-GIS Software Development, Map/Document Scanning, Digitization, Data Entry, Maintenance & Training), Mar-June, 2006.
<b>DLRS/GoB</b>	Digital Khatian (Land Record of Rights) Preparation Program of Directorate of Land Records and Surveys (DLRS): MIS-GIS Integrated Software development, installation, integration, document scanning, data entry/conversion, laser printing & volume binding and training, March 2006-Dec, 2009.
<b>MOL/GoB</b>	Computerization of CS, SA Records (Record of Rights) of Dhaka Collectorate, Ministry of Land (Software development, document scanning, data entry/conversion, maintenance and training), 2005 to Jun, 2007.
<b>ADB/DLRS:</b>	MLDP - Modernization of Land Administration Project (TA#2307BAN), 1995-1996.
<b>RAJUK/UNDP</b>	Dhaka Metropolitan Development Planning Project, UNDP/UNHCR, 1992-1994.
<b>BPC/GOB</b>	Feasibility Study of a 10 Storied Foundation Shopping Complex-cum-International Standard Hotel Project at Motel Saikat, Bangladesh Parjatan Corporation, Feb-Jun, 2003.
<b>HSD/ADB:</b>	Institutional Strengthening Project of Housing Settlement Directorate, 1991.
<b>LGED/UNDP</b>	Assessment Flood Damage to Rural Housing following 1988 Floods, UNCDF, 1988-89.
<b>Public Sector Reform &amp; Governance</b>	
<b>MSW</b>	“Digital Recruitment Systems (IT & Related Service Provide for the Recruitment) – Data Entry, Photo Scanning, Processing and Management of candidates under different categories of Ministry of Social Welfare”







<b>DSS</b>	"Digital Recruitment Systems (IT & Related Service Provide for the Recruitment) – Data Entry, Photo Scanning, Processing and Management of candidates under different categories of Directorate of Social Services"
<b>UNDP</b>	National Assembly and Upazila Candidates Data Entry Work for UNDP, Nov - Dec 2008
<b>DG Food</b>	Digital Recruitment Systems (IT & Related Service Provider for the Recruitment of DG Food). "Software Development, applicant data entry, admit card & attendance sheet printing, OMR Form supply and optical mark reading and final result processing of 4,00,000 lacs applicant", May 2011- May-2014
<b>DG Food</b>	IT & Related Service Provider for the Recruitment of DG Food (National), 2009 -2010
<b>MOL</b>	Preparation of Freedom Fighters List, Ministry of Liberation War Affairs, 2009
<b>EC/GOB</b>	Preparation of Voter List and Voter Data Validation: Rajshahi & Natore Dists. 2006-07.
<b>ADB (TA)/DCC</b>	Promoting Good Governance for Dhaka City, (TA#3053 BAN), ADB, 1999-2001.
<b>EC/GOB</b>	Voter ID card Project: Preparation of Voter Database & ID Card for Rajshahi, Sirajgonj and Gaibandha Districts, 1995-2000.
<b>JICA/LGED</b>	A Profile Study ion Good Governance in Bangladesh, JICA, 1996.
<b>ADB TA/IMED</b>	Strengthening of the Post-Evaluation Capacity of IMED-TA#2076 BAN, ADB, 1994
<b>BEEB/GOB</b>	Commercial Viability of Bangladesh Education Equipment Board, GoB, 1990.
<b>Agriculture &amp; Rural Development</b>	
<b>CHTA/ADB</b>	CHTDP-Chittagong Hill Tracts Development Project, Advisory, May 2004-June 2008.
<b>DAE/IDB</b>	IADOPD-Integrated Agricultural Development with Orange and Pineapple Development in greater Sylhet Districts: Baseline Survey, May to Aug 2004.
<b>DAE/IDB</b>	GMSPIADP-Gopalganj, Madaripur, Shariatpur & Pirojpur Integrated Area Development Project: Participatory Rural Appraisal & Baseline Survey, May-Sep, 2003
<b>DAE/ADB</b>	SAIP-Sherpur, Mymensing and Jamalpur Small Holder Agricultural Improvement Project: Adivashi Communities Participatory Need Assessment (PNA), May-June 2003
<b>DAE/IDB</b>	BPJB SHSP - Barisal, Patuakhali, Jhalkathi and Baguna Small Holder Support Project : Participatory Rural Appraisal (PRA) and Baseline Survey, Mar-June, 2003.
<b>CHTA/ADB</b>	ADB TA : Chittagong Hill Tracts Region Development Plan, 2000-2001
<b>BRDB/ADB</b>	RPCP-Rural Poor Cooperative Project: Skill Development Training,1995-97.
<b>MOA/EU</b>	NMIDP-National Minor Irrigation Development Project: a) Survey of ITW Operations, 1994, b) National Minor Irrigation Census, 1995, c) Validation Survey, 1995, d) Ground Water Irrigation Survey, 1995
<b>MOY/ADB</b>	TRDEP - Thana Resources Development & Employment Program ()--Baseline, 1995.
<b>PC/WB</b>	Agricultural Development Strategy & its Implications In Transport, 1993-94.
<b>DAE/WB</b>	Review & Assessment of NMIDP, STW Project and LLP Project, 1993.
<b>BRDB/WB</b>	Financial Viability/Business Management Training for Selected UCCAs, 1991-92.
<b>BRDB/JICA:</b>	CMRDP-II-Comilla Model Rural Development Plan Project (Phase-II), 1990-91.
<b>BRDB/EU:</b>	RRRDP-Rangpur Region Rural Development Program (RD-9), 1990- 1991.
<b>DAE/CIDA:</b>	CDP- Crop Diversification Project: Dealer Development Survey, 1991.
<b>BRDB/GTZ:</b>	TARDP-Tangail Agricultural & Rural Development Project: Appraisal Mission, 1988.
<b>BRDB/GTZ:</b>	TRDP-Tangail Rural Development Project: Study on Organization & Management, Ground Water Use, 1988.
<b>BRDB/DANIDA:</b>	NRDP-II - Noakhali Rural Development Project-II: Mid-term Evaluation, 1988.
<b>LGED/DANIDA:</b>	Comparative Study of Implementation Models for Rural Infrastr. Development, 1988.
<b>BRDB/FAO:</b>	Evaluation of Irrigation Management Program of RD-II & SWRD Project, FAO, 1988.
<b>BRDB/DANIDA</b>	NRDP-II - Noakhali Rural Development-II Project: Baseline Survey, 1987.
<b>DAE/IFAD &amp; GTZ</b>	KMSFSCIP-Kurigram Marginal & Small Farm Systems Crop Intensification Project: Project Formulation, 1987.
<b>Fisheries &amp; Livestock</b>	
<b>BLRI/JICA:</b>	PMTIP- Poultry Management Technique Improvement Project: Impact Study, 2002.
<b>DOF/DFID:</b>	FAP-17 - Bangladesh Fisheries Study: Sector Study, 1992-1994.
<b>FPCO/USAID:</b>	Nutritional Consequences of Fisheries Bio-Diversity, FPCO, USAID, 1991-1993.
<b>DOF/IFAD:</b>	OLSFP - Ox-bow Lake Small-scale Fisheries Project: Appraisal Mission, 1987-88.





<b>BRDB/GTZ:</b>	TRDP-Tangail Rural Development Project: Small Holder Livestock Development - Appraisal Mission, 1988.
<b>DOL/IFAD:</b>	Small Holder Livestock: IFAD Project Identification Mission, 1987
<b>Water Resources</b>	
<b>LGED/ADB:</b>	SSSWRDSP-2-Second Small-Scale Water Resources Development Sector Project - Supporting Water Management Associations, Dec 2002 to Dec 2008.
<b>BWDB/WB:</b>	CERP-II-Coastal Embankment Rehabilitation Project-II: Impact Assessment, 2002-2003
<b>BWDB/CFD(France):</b>	FAP 3.1 - Jamalpur Project: Flood Proofing Program, 1995-98.
<b>FPCO/USAID:</b>	FAP-23 - Flood Proofing Study, 1991-1993.
<b>BWDB/JICA:</b>	KFCDI-Kurigram Flood Control Drainage & Irrigation Project-South: Feasibility, 1991-92.
<b>BWDB/DGIS &amp; KFW</b>	FAP-20-Tangail Compartmentalization Pilot Project: Baseline Survey, 1991-1992.
<b>FPCO/USAID:</b>	FAP-14-Flood Response Study, Flood Action Plan, 1991-1992.
<b>FPCO/USAID:</b>	Population & Resource Survey-the Ganges, Padma, Meghna, Jamuna, Teesta River Systems, 1991-1992
<b>BWDB/WB:</b>	DFC-II-Drainage & Flood Control-II Project: Evaluation Study of (a) Chalan Beel Polder-D FCDI Project, (b) Satla-Bagda FCDI Project, (c) Hail Haor FCDI Project, 1989
<b>BWDB/ADB:</b>	KCERP-Khulna Coastal Embankment Rehabilitation Project: Bench Mark & PBME, 1986.
<b>Water Supply &amp; Sanitation</b>	
<b>BWSPP</b>	External Monitoring and Evaluation of implemented schemes/sub-projects under component 1, 2 & 3 (as well as other related activities) of Bangladesh Water Supply Program Project (BWSPP) (Package No. S-6001), 2010
<b>DPHE/ADB:</b>	Secondary Towns Water Supply and Sanitation Sector Project- Baseline , April – June 2009
<b>CWASA/WB:</b>	MWSP - Mohra Water Supply Project: Surface Water Treatment Plant-90 MLD Capacity, Rehabilitation of Potenga Booster Station, Transmission of Distribution Pipeline - Detail Design, Specification, Bill of Quantities, Estimates, Tender Documents Preparation, Construction Supervision, Quality & Quantity Certification, Trail Run, Commissioning, Final Acceptance, Training, Dec 2004 to Jun 2008.
<b>DPHE/WB:</b>	BAMWSP - Bangladesh Arsenic Mitigation Water Supply Project: Collection of Village Locations by GPS for spatial analysis (Piloting in 5 Upazila) & spatial analysis of the village level arsenic data comparing hydro-geological, geological and river network data available with NAMIC (Pack. S876), March, 2005 to December, 2006.
<b>DPHE/WB:</b>	Private Sponsors to Pilot Piped Water Supply Systems in Arsenic Contamination Village/Growth Centers - Feasibility , Detail Design & PP preparation, Jul-Dec, 2004.
<b>UNICEF/DFID:</b>	Assessment of the Capacity, Willingness of Local Government and other Stakeholders to Improve the Sanitation and Hygiene Practice at Community Level, March to Dec 2005
<b>DPHE/WB:</b>	BAMWSP-Bangladesh Arsenic Mitigation Water Supply Project - MIS-GIS Integrated Software Development, Data Entry, Web Site Development & Update, Training and Technical Support (Phase-III), World Bank, Sep. 2002- June 2005.
<b>KCC/GOB:</b>	Feasibility Study of Surface Water Treat Plant - Detail Engineering Drawing and Design, Construction Supervision, Khulna City, 2003-2004.
<b>DASCO/CARE/IDE:</b>	WATSAN Water & Sanitation Partnership Project: Software & Database, 2001-2003.
<b>DPHE/WB-SDC:</b>	Bangladesh Arsenic Mitigation Water Supply Project: Software Development, Data Entry, and Map Digitization (Phase-II), Mar 2001-Oct. 2003.
<b>DPHE/WB:</b>	Monitoring & Evaluation on Arsenic Awareness-raising during Screening Activities Being Implemented by BAMWSP in 147 Upazilas (Credit # 3124-BD), Mar-Jun, 2003
<b>KCC/GOB:</b>	Feasibility , Drawing of Water Treat. Plant, Ground Water Use of Khulna City, 2002-03.
<b>DPHE/DANIDA:</b>	User Level Survey, Institutional Review of Water Supply & Sanitation Sector Project, DANIDA,2002-03
<b>DWASA/WB:</b>	Dhaka Water Supply Project-IV: Water Management Study 1997-98.





<b>CWASA/WB:</b>	Unaccounted Water Management Program, Chittagong WASA, WB, 1993-95.
<b>DPHE/UNICEF:</b>	DPHE-UNICEF 4 (Four) Water Supply Projects (i) Rural Water Supply in Low Water Table Area Project, (ii) Water Supply in Shallow Water Table Area Project, (iii) Installation of Rural Water Supply Coastal Belt Facilities, (iv) Rural Water Supply Rehabilitation Project-II ---: Evaluation Study, UNICEF, 1995.
<b>DPHE/DGIS:</b>	Eighteen District Towns Water Supply & Sanitation Project, DGIS, 1990-1995.
<b>UNICEF:</b>	Strengthening Monitoring System of Water & Environment Systems (WES)-MIS Software Development-Installation-Operation & Maintenance, UNICEF, 1993.
<b>UNICEF/DPHE:</b>	Sanitation Training Curricula Review/Needs Assessment, UNICEF, 1992-1993.
<b>UNICEF/DPHE:</b>	Sanitation Program in Primary Schools, UNICEF, 1992-1993.
<b>UNICEF/DPHE:</b>	Tara Pump Caretakers Families' Training Program, UNICEF, 1993.
<b>DPHE/DGIS</b>	Twelve District Towns Water Supply, Sanitation & Drainage Project, DGIS, 1989-1991.
<b>Power, Energy and Telecom</b>	
<b>PDB/KFAED (Kuwait)</b>	Greater Chittagong Power Distribution Project Phase-III, October 2003 - December 2005.
<b>MOPT/WB</b>	The Restructuring of the Bangladesh Telegraph and Telephone Board, 2005 to 2008
<b>Jalalabad Gas</b>	Rehabilitation/Recompilation of the leftover works of Telecommunication System that spread over 200 km connecting, August 2004 - February 2005.
<b>TGTDCL/ADB</b>	TNGDP-Third Natural Gas Distribution Project: AM/FM) Systems, March 2001-Dec 2003.
<b>AES (USA)</b>	Haripur 360 MW Power Plant Project: EIA and Resettlement, 1998-2001.
<b>AES (USA)</b>	Meghna Ghat 450 MW Power Plant Project: EIA and Resettlement, 1999-01.
<b>KPCL:</b>	Khulna Power Barge Project (114 MW): Environmental Impact Assessment, 1997-1999.
<b>Environment</b>	
<b>IWTA/ADB</b>	Inland Waterways Environment Monitoring & Control IWT-III, 1996-1998.
<b>UNICEF/USAID</b>	Strengthening Monitoring Systems of Water & Environment Study, 1993-1994.
<b>FPCO/USAID</b>	FAP-16-Flood Action Plan : Environmental Study, 1991-1993.
<b>FPCO/USAID</b>	FAP-19 - Geographical Information Systems (GIS): Technical Support through GIS to all FAP Components for project planning, design & monitoring, 1991-93.
<b>DOF/WB</b>	Environmental Impact Assessment Plan for Forestry Management Plan, 1993.
<b>Road, Transport, Port &amp; Waterways</b>	
<b>RHD:</b>	Consultancy Services for Detail Design and Construction Supervision of Civil Works under 4-Lanning of Dhaka-Chittagong Highway Project (Daudkandi-Chittagong section), Roads and Highway Department (RHD), May'06 to Dec'10.
<b>RHD/DFID</b>	BRP-Bridge Replacement Project: Social Consultancy for 36 Narrow Bridges, 2005-07.
<b>BIWTA/GOB</b>	Expansion, Modernization and Beautification of Dhaka, Khulna, Narayanganj, Chandler and Barisal River Port Terminal and Adjacent Areas, Oct'03 - June'04.
<b>BIWTA/GOB:</b>	Feasibility Study and Detailed Design for Providing Landing Facilities at Three Coastal Upazilas (Teknaf, Sandwip & Monpura) for River Crafts, Apr.-Dec., 2003.
<b>SSA/IFC &amp; OPIC:</b>	PPCTP-Potenga Point Container Terminal Development, EIA and Resettlement 1999-2002.
<b>CARE/CIDA</b>	RMP - Rural Maintenance Program: Road Impact Study, CIDA, 1998-1999.
<b>MOPS/ADB (TA)</b>	PUP - Ports Upgrading Project (TA No. 2863 BAN), MOPS, ADB, 1997-98.
<b>CPA/WB</b>	PSDP-Port System Development Project: Master Plan & Trade Facilitation , 1997-98.
<b>IWTA/ADB</b>	Inland Waterways Environment Monitoring & Control (IWTA-III), ADB, 1996-98.
<b>Wanker/Miliev:</b>	Transit - A Multi-Purpose Warehouse-cum-Transport Project, Dutch Fund, 1997.
<b>PC/UNDP &amp; WB</b>	BTSS - Bangladesh Transportation Sector Study, 1993-94.
<b>LGED/DANIDA</b>	Rural Trade and Transport Study, Project Identification, DANIDA, 1990.
<b>RHD/USAID</b>	FRMIP - Feeder Road Maintenance & Improvement Project: Recurrent Cost and Economic Feasibility, USAID, 1988.
<b>Health &amp; Family Planning</b>	
<b>DGFP</b>	Study to Assess the Utilization of MIS Forms at Upazila and Field Level, Directorate General of Family Planning, 2011
<b>PROSHIKA/WB</b>	Integrated Nutrition Programme, Data Entry & Data Processing, GoB/WB, 2002







<b>DOH/ADB</b>	Regional Study on Nutrition and Child Health-ADB Mission, ADB, 1996.
<b>DOH/JICA</b>	JICA Sector Profiles Study, DOH, JICA, 1996.
<b>DOH/GTZ</b>	Preparation of Training Manuals for Thana Level Health Officials, DOH, GTZ, 1994.
<b>FPCO/USAID</b>	The Effects of FC & Drainage on Vector Disease Abundance, FPCO, USAID, 1992, 93.
<b>FPCO/USAID</b>	Kala Azar Study (under FAP Environmental Study), FPCO, USAID, 1992-1993.
<b>DOPFP/UNFPA</b>	Assessment of the Injectables Program in Bangladesh, UNFPA, 1987.
<b>Financial Institutions &amp; Industries</b>	
<b>Sonali Bank</b>	Sonali Bank Recruitment System, 2010
<b>CIDA/PDBF</b>	MELA - Micro Enterprise Loan - Program Review, Oct 2004 to Jan 2005.
<b>ADB/SEC:</b>	Capacity Building of Securities & Exchange Commission (SEC), ADB TA, 3533, 2002-2003.
<b>BTB/EU</b>	Preparation of Banking Plan for Tea Sector Development in Bangladesh, EU, 2002-03
<b>BB/WB:</b>	Poverty Alleviation Micro-Finance Project: MFIs Regulatory Framework Dev., 1997-99.
<b>ADB:</b>	Insurance Industry and Pension and Provident Fund Reforms Project, ADB-TA, 1999.
<b>DFID/CBP:</b>	Tea Garden Workers Provident Fund Systems Development, DFID, 1999-2000.
<b>IFAD/GB:</b>	Credit Study for Financing Grameen Bank – Project ID Mission, GB, IFAD, 1987.
<b>IFAD/BSCIC:</b>	Studies on Micro Industries Development in Bangladesh, IFAD, 1987.
<b>PC/WB:</b>	Studies on Rural Micro Industries Development, PC, the World Bank, 1986.
<b>Education</b>	
<b>DSHE</b>	Data Entry, Processing & Data Management under SPSD for the year 2014-2015
<b>DSHE</b>	Data Entry, Processing & Data Management under FSPD for the year 2013-2014
<b>DSHE</b>	Data Entry, Processing & Data Management under FSPD for the Academic year 2009-2010, 2010-2011 & 2011-2012
<b>DSHE</b>	Data Entry, Processing & Data Management under HSSP for the Financial year 2014-2015
<b>DSHE</b>	Data Entry, Processing & Data Management under HSFSP-4 for the Financial year 2010-2011, 2011-2012, 2012-2013 & 2013-2014
<b>DSHE</b>	Data Entry, Processing & Data Management under Secondary Education Stipend, 2 <sup>nd</sup> Phase Project (SESP-II) for the Academic year 2014-2015
<b>DSHE</b>	Data Entry, Processing & Data Management under SESP for the Academic year 2010-2011, 2011-2012, 2012-2013 & 2013-2014
<b>LGED/PMT</b>	Data entry of Enrollment information and Photo Capture of PMT new Student's for preparing ACF for January-June-2015 Semester under 125 Upazila; Proxy Means Testing (PMT) Administration, LGED, Government of Bangladesh
<b>LGED/PMT</b>	Data Entry of Students' monitoring information and Preparation of Award Confirmation Forms (ACF) for general stipend of SESP's Students for July-December-14 under new 90 Upazila; Proxy Means Testing (PMT) Administration, LGED, Government of Bangladesh; December 2014
<b>LGED/PMT</b>	Data Entry of PMT Applicant's Information for Preparing Beneficiary list for year 2014 under 125 Upazila; Proxy Means Testing (PMT) Administration, LGED, Government of Bangladesh; December 2014
<b>LGED/PMT</b>	Data Entry, Processing and Data Management and Data Archiving of PSC Results and Enrollment information for preparation of ACF for January-June 2014 Semester under 125 upazila; Proxy Means Testing (PMT) Administration, LGED, Government of Bangladesh; March 2014
<b>LGED/PMT</b>	Data Entry of PMT Application Form for new PMT Applicant for Academic year-2013 under 125 Upazila –Proxy Means Testing (PMT) Administration, LGED, Government of Bangladesh; November - December 2013
<b>LGED/PMT</b>	Data Entry for PMT Application Forms collected from 122 Project Upazilas of 61 Districts, Local Govt. Engineering Department (Fund: World Bank), 2009-2013
<b>DSHE/ADB</b>	SESDP-Secondary Education Sector Development Project – Software Development and Data Entry of Stipend Program, June 2008 – June, 2009.
<b>HSFSP</b>	Higher Secondary Female Stipend Project, Phase-3- Data Entry & Processing,, 2005- 09
<b>DSHE/ADB:</b>	SESIP-Secondary Education Sector Improvement Project, ADB, 2001-2006.





<b>Islamic University</b>	Detailed Area Plan, Planning, Design, Construction Supervision of Two Hostels, 2003-05.
<b>DSHE/ADB</b>	Management Strengthening Component of SESIP: Research Study for Decentralized Management of Secondary Education (Research Study-2), Sep to Nov 2004.
<b>DSHE/NORAD</b>	Female Secondary Education Stipend Project-III: Database Management, 2004-2005
<b>IDA/PMED:</b>	National Framework, Advocacy & Dissemination: IDA Cr-3467, Pack# S2, 2003 - 04.
<b>DPE/DFID</b>	ESTEEM-Effective Schools through Enhanced Education Management Project, 2001-04.
<b>UNESCO:</b>	Study on the Status of Public and Private Schools in Bangladesh, Sep-Dec, 2003.
<b>DPE/IDA:</b>	Study on Impact on C-in-Ed Training under IDA PEDP, IDA, June-Dec, 2003
<b>DSHE/ADB:</b>	SESIP Management Strengthening Component: Studies for Development and Pilot of a Model for Decentralized Management of Secondary Education (Study-1), Jan-Dec, 2003.
<b>DPE/ADB:</b>	Delivery of the Curriculum (under SPES Project), ADB, 2001-2002.
<b>DPE/ADB:</b>	Factors Influencing the Qualitative Improvement of Primary Education, ADB, 2001-02.
<b>DPE/UNESCO:</b>	Study on Dropout and Non Completion of Girls Pri-Sec. Education, UNESCO, 2001.
<b>ADP/DNFE:</b>	Non-Formal Education Project (NFE II) - PPTA, ADB, 2000-2001.
<b>UNESCO/DPE:</b>	Effect of Rapid Increase of Primary Education Enrolment, UNESCO, 2000-2001.
<b>DNFE:</b>	Post Literacy and Continuing Education Program, the World Bank, 2000-2001.
<b>PMED/DFID:</b>	Cost Sharing Study for Education - South Asia Perspective, DFID, 2000-2001.
<b>DNFE/ADB:</b>	Non-Formal Education Project (NFE-I), ADB, 1995-2001.
<b>PMED/UNESCO:</b>	EFA-Education For All - Five-Sector Study, 1999-2000.
<b>PMED/WB:</b>	FFEP-Food For Education Program: Assessment/Evaluation, World Bank, 1999-00.
<b>DPE/DFID:</b>	EMIS of Effective Schools through Enhanced Education Management, DFID, 1997-98.
<b>DSHE/ADB</b>	Reforms of Higher Secondary Education Program (1123 BAN), ADB, 1995-1997.
<b>DSHE/EU:</b>	Capacity Assessment of Teachers Training Colleges, EU, 1997.
<b>PMED/WB</b>	Evaluation of NFPE, SSP-Satellite School, SAP-School Attractiveness, WB, 1996.
<b>DNFE/WB:</b>	Mainstreaming Study of Students of NFE Centers to Primary Schools, WB, 1995-96.
<b>DNFE/NORAD</b>	Integrated Non-Formal Education Program: Mid-Term Review, NORAD, 1995-1996.
<b>DPE/GTZ-BMZ</b>	Identification of Primary Education Support Program, GTZ/BMZ, 1994.
<b>PMED/WB</b>	GEP-General Education Project, Non-Formal Primary Education Program: M & E, 1993-96
<b>DPE/WB/SIDA:</b>	Survey & Analysis of 94-95 Data of Primary Education Institutes, 1995-96.
<b>WB/PMED:</b>	SAP-School Attractiveness Program: Benchmark Survey, The World Bank, 1995.
<b>PMED/WB:</b>	Non-Formal Primary Education Project: Overseas Fellowship Training, WB, 1995.
<b>DPE/ADB:</b>	Institutional Strengthening of the Directorate of Primary Education, ADB, 1994-95.
<b>PMED/WB</b>	Requirement of Additional Classrooms in the existing Primary Schools, WB, 1994.
<b>ADB/DSHE:</b>	Follow-up of the Secondary Science Education Project Performance Audit, ADB, 1993.
<b>BOU/ADB:</b>	Need Assessment Survey of Bangladesh Open University, 1993-1994.
<b>DPE/WB:</b>	Personnel Policy Planning Study of Education Sector, the World Bank, 1993-1994.
<b>DPE/UNESCO:</b>	Evaluation Study of Universal Primary Education Program, 1987.
<b>MOE/UNDP</b>	Education MIS Development for the Ministry of Education, 1989-1990.
<b>DPE/UNDP</b>	Education MIS Development for the Directorate of Primary Education, 1986-88.
<b>DPE/UNESCO:</b>	Study on the Implementation of New Promotion Policy, UNESCO, 1988.
<b>GTZ/BTEB:</b>	Vocational & Technical Education Project in Bangladesh - ID Mission, 1988.
<b>UNESCO/DPE:</b>	Using of Community Facilities to Relieve Overcrowded Primary Schools, 1988.
<b>PMED/WB</b>	School Profile Study of Government Primary Schools, the World Bank, 1992-1993.
<b>DPE/UNESCO:</b>	Guidelines for Upazila Planning for Primary Education Development, 1987.
<b>DPE/UNESCO:</b>	Participation of Authorities in Planning and Implementation of ISDP, 1986.
<b>Science &amp; Technology</b>	
<b>SIRD</b>	Upgrading of Projects Innovated by Young Scientists (P-IV) -Evaluation, Science Museum
<b>SIRD</b>	Bio-gas Pilot Project (I/II)-Evaluation, Science & Industrial Research Division, 2003.
<b>STD/WB:</b>	Feasibility Study for the Establishment of Biotechnology Institute, 1992-93.
<b>Gender Development</b>	
<b>Jatia Mahila</b>	Curriculum Design and Handicrafts for Advanced Entrepreneurial & Skill Training -





<b>Sangstha/ UNDP:</b>	Garments Technical Skill, UNDP, June – Sep, 2003.
<b>DSHE/WB:</b>	Female Secondary School Assistance Program – Impact Study, WB, 1997.
<b>DSHE/NORAD:</b>	Female Secondary Stipend Project: Appraisal on Restructuring, NORAD, 1995.
<b>DSHE/EU:</b>	Appraisal of Female Secondary Teachers Training Project, EU, 1997.
<b>DSHE/NORAD:</b>	Female Secondary Stipend Project: Mid-Term Review, NORAD, 1995-1996.
<b>SSS/RDE(Dutch):</b>	Study on Female Headed Household in Tangail CPP Area, DGIS, 1995.
<b>EU/DSHE:</b>	Gender Equity Consideration of Secondary Education, EU, 1995.
<b>GTZ/BRDB:</b>	Assessment Report on Women Training Institute at Tangail, GTZ, 1987.
<b>UNICEF/DWA:</b>	Baseline Survey on Community Based Women NGOs in 6 Districts, UNICEF, 1982-83.
<b>Overseas Training/Study Tour</b>	
<b>DPHE/WB/SDC</b>	BAMWSP – Bangladesh Arsenic Mitigation Water Supply Project–Overseas Training on Rural Piped Water Systems and Rain Water Harvesting Systems of Vietnam, India, Thailand, Aug 2004 to Dec 2005.
<b>CDA/GOB</b>	Chittagong City Master Plan Project – Overseas Visit on Master Plan Implementation (Malaysia and Thailand), May, 2005
<b>DPHE/WB/SDC</b>	BAMWSP – Bangladesh Arsenic Mitigation Water Supply Project – Overseas Training on Rural Piped Water Systems and Rain Water Harvesting Systems of Vietnam, 2004-2005.
<b>MOPT/WB</b>	Strengthening the Policy Formulation Capabilities of Ministry of Post and Telecommunications (IDA Credit# 3790-BD) – Organization of training programs (Package 2.5) through Study tour on regulations, procedures, strategy & operational process, Malaysia, Sri Lanka, India, Pakistan, July 2004 to Dec 2005.
<b>PMED/WB:</b>	Post-Literacy and Continuing Education for Human Development Project – Study Tour and Foreign Training Management, 2004 to 2005.
<b>M/O Labor/GOB:</b>	Management of Overseas Study Tour under Eradication of Hazardous Child Labor in Bangladesh Project, Ministry of Labor, 2002 to 2003.
<b>DSHE/ADB:</b>	Higher Secondary Education Development Program: Overseas Training, ADB, 1995-96.
<b>BARC/USAID:</b>	Winrock International Human Resources Dev. Program Evaluation, USAID, 1995.
<b>PMED/WB:</b>	Study Tour (India, Pakistan & Nepal) for Construction of Low Cost Schools, GEP, 1995-96.
<b>NGOs &amp; Private Sector</b>	
<b>CARE/USAID:</b>	SHAHAR Project: Integrated Food Security Program (IFSP) -- Internal Review and Development of the 'M & E' Component, May to June 2003.
<b>CARITAS-SDI/CorsAid</b>	Need Assessment & Socio-economic Survey of Hard Core Poor of Sandwip, 2002-03
<b>AG BV:</b>	Cattle Slaughter House Project in Dhaka City, Dutch MILIEV Fund, 1999-2000.
<b>NGO:</b>	Activities Evaluation in Bangladesh and India by Ireland Aid, Ireland Fund, 2001.
<b>DAM/CordAID:</b>	Evaluation of 'Each One, Teach One' Project, Dhaka Ahsania Mision (DAM), 2000.
<b>UCEP:</b>	Contribution of NGOs, Empowering Urban Poor Children through NFE, 1999-2000.
<b>Tebodim:</b>	LPG Plant Project at Mongla, Dutch MILIEV fund, 1998.
<b>Wanker:</b>	Transit – A Multi-Purpose Warehouse-cum-Transport Project, ORET/MILIEV, 1997.
<b>UCEP/DFID:</b>	Pre-Planning Study: Project Strategies & Identifying Para-Traders for Poor Working Children, 1995.
<b>UCEP:</b>	Vocational Program Linking to Education for Underprivileged Working Children, 1994.
<b>UCEP:</b>	Integrated Technical Education Program: Curriculum Development, 1994.
<b>SCI/CFD (France):</b>	Socio-economic Survey of the Jamuna River Systems, 1991.
<b>Others</b>	
<b>Unicef/CIDA</b>	Baseline Survey and Mapping of BEHTRUWC, Mar-Dec, 2005
<b>UNDP/DFID:</b>	Humanitarian Assistance Program (BGD/04/009), Monitoring of Shelter and Cash Subsidy Program May to Oct 2005
<b>UNDP/DFID:</b>	Monitoring of Humanitarian Assistance Program (BGD/04/009), Dec 2004 to Mar 2005
<b>JICA</b>	Survey of Consultancy, Construction and Equipment Supply Organization, 2005
<b>JICA:</b>	Survey of NGO Activities in Bangladesh, JICA, Dec. 1994 – Feb. 1995.
<b>USAID:</b>	Employment and Demand Creation (under PL-480 Title-III MYA), USAID, 1985.





# PROFILE





## Contact Information

### Address, Phone and Fax:

### Development Planners & Consultants (DPC)

Hamid Center, 6<sup>th</sup> Floor, 42 Kazi Nazrul Islam Avenue, Kawran Bazar, Dhaka 1215, Bangladesh.

### Contact

+088 02 58156126

### Email Address

info@dpc-bd.org

**Mobile:** Mr. Ayub Ali,  
01711781793

**URL:** [www.dpc-bd.org](http://www.dpc-bd.org)

